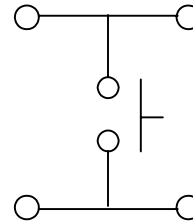
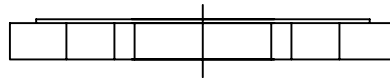
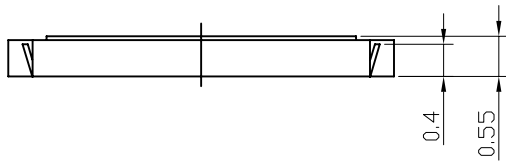


CIRCUIT DIAGRAM



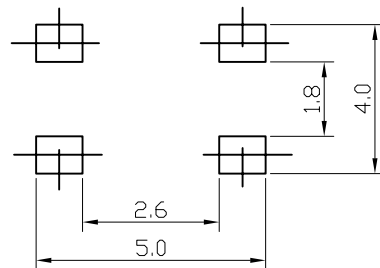
SPECIFICATION

1. RATING: 50mA,DC12V MAX.
2. CIRCUIT: 1C-1P
3. OPERATING FORCE:
RDI P/N: RTS-1197A-XXX-NL[XXX=160, 250 ± 50gf]
4. CONTACT RESISTANCE: 100mOhm MAX.
5. TRAVEL: 0.2±0.1mm
6. LIFE: 100,000 CYCLES MIN.



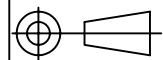
NOTE: ALL DIMS ARE GIVEN IN mm

P.C.B LAND DIMENSION



No.	PARTS NAME	MATERIAL	SPECIFICATION	REMARK
1	CASE	LCA(LIQUID CRYSTAL POLYMER)		
2	TERMINAL	PHOSPHOR BRONZE	C5210R	Ag PLATE
3	CONTACT	STAINLESS	SUS301	Ag CLAD
4	DUST COVER	KAPTON FILM		

PROJECTION



Research Develop Innovate

RDI, Inc. 400 Columbus Avenue Valhalla, NY 10595

SCALE N/A

TITLE LOW PROFILE TACT SWITCH-SMT-RoHS COMPLIANT

TOLERANCE EXCEPT AS NOTED	DR. JIN	DATE 05/18/07	REF. P/N: RTS-1197A-XXX-NL	SHEET 1 OF 3
DEC. INCHES N/A	CK. BM	PRE-SW	DRAWING NO. 3206	SIZE F
DEC. MILLIMETERS ±0.2	THIS DOCUMENT IS OWNED BY, AND THE INFORMATION CONTAINED IN IT IS PROPRIETARY TO, RDI, BY RECEIPT HEREOF THE HOLDER AGREES NOT TO USE THE INFORMATION AND NOT TO DISCLOSE IT TO ANY THIRD PARTY, NOR REPRODUCE THIS DOCUMENT WITHOUT THE WRITTEN CONSENT OF RDI, AND AGREES TO RETURN THIS DOCUMENT FORTHWITH UPON REQUEST.			
ANG. N/A				

ECN#	DATE	SYM	REVISION RECORD	AUTH	BY

1. GENERAL

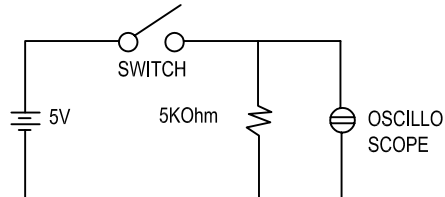
- 1.1 SWITCH ACTION: PUSH-ON TYPE S.P.S.T
- 1.2 SWITCH RATING: DC 12V,50mA MAX.
- 1.3 OPERATION TEMPERATURE RANGE: -30 °C~85°C
- 1.4 PRESERVATIVE TEMPERATURE RANGE: -30 °C~85°C
- 1.5 APPEARANCE AND DIMENSIONS: SEE OUTSIDE DRAWING PAGE
- 1.6 STANDARD CONDITIONS: UNLESS OTHERWISE SPECIFIED,THE TEST AND MEASUREMENTS SHALL BE CARRIED OUT AS FOLLOWS:
 - 1-6-1 AMBIENT TEMPERATURE: 5~35 °C
 - 1-6-2 RELATIVE HUMIDITY: 45~85% RH
 - 1-6-3 AIR PRESSURE: 86~106KPa(860~1060mbar)

HOWEVER,IF DOUBT ARISES ON THE DECISION BASED ON THE MEASURED VALUES UNDER THE ABOVE MENTIONED CONDITIONS,THE FOLLOWING CONDITIONS SHALL BE EMPLOYED.
 - 1-6-4 AMBIENT TEMPERATURE: 20±2°C
 - 1-6-5 RELATIVE HUMIDITY: 65±5% RH
 - 1-6-6 AIR PRESSURE: 86~106KPa(860~1060mbar)

2. PERFORMANCE

2-1 ELECTRICAL CHARACTERISTICS

No	ITEM	TEST CONDITIONS	PERFORMANCE
2.1.1	CONTACT RESISTANCE	APPLYING A STATIC LOAD TWICE THE ACTUATING FORCE TO THE CENTER OF THE STEM,MEASUREMENTS SHALL BE MADE WITH A 1KHz SMALL-CURRENT CONTACT RESISTANCE METER.	100MOhm MAX
2.1.2	INSULATION RESISTANCE	MEASUREMENTS SHALL BE MADE FOLLOWING APPLICATION OF DC 100V POTENTIAL ACROSS TERMINALS AND ACROSS TERMINALS AND FRAME FOR ONE MINUTE.	100MOhm MIN
2.1.3	DIELECTRIC WITHSTAND VOLTAGE	AC 250V(50Hz OR 60Hz) SHALL BE APPLIED ACROSS TERMINALS AND AND ACROSS AND FRAME FOR ONE MINUTE.	THERE SHALL BE NO BREAKDOWN
2.1.4	BOUNCE	LIGHTLY STRIKING THE CENTER OF THE STEM AT A RATE ENCOUNTERED IN NORMAL USE(3 TO 4 OPERATIONS PER SEC.) BOUNCE SHALL BE TESTED AT ON' AND OFF'	5m SEC MAX



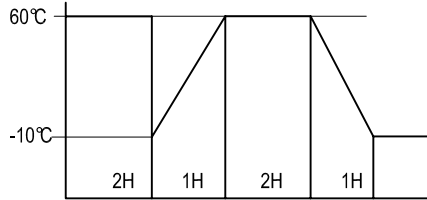
2-2 MECHANICAL CHARACTERISTICS

No	ITEM	TEST CONDITIONS	PERFORMANCE
2.2.1	OPERATING FORCE	PUSH BY RECOMMENDED OPERATING CONDITION. 	PLEASE REFER TO THE DRAWING
2.2.2	TRAVEL	PUSH BY RECOMMENDED OPERATING CONDITION. F=(OPERATION FORCE)X2 	0.2±0.1mm
2.2.3	STOP STRENGTH	A STATIC LOAD OF 3Kgf SHALL BE APPLIED IN THE DIRECTION OF STEM OPERATION FOR A PERIOD OF 60 SECONDS.	NO DAMAGE (ELECTRICAL AND MECHANICAL)
2.2.4	IMPACT SHOCK TEST	1) ACCELERATION: 80g 2) CYCLE OF TEST: 3 CYCLES EACH IN 6 DIRECTIONS, FOR TOTAL 18 CYCLES 	No 2.1 AND 2.2.1 TO 2.2.2 SHALL BE SATISFIED.
2.2.5	SOLDERING HEAT TEST	1) SOLDERING AREA: 1/2 OF P.W.B THICKNESS(P.W.B: t=1.6) 2) SOLDERING TEMPERATURE: 260±5°C 3) SOLDERING TIME: 5±1 SEC	No 2.1 AND 2.2.1 TO 2.2.2 SHALL BE SATISFIED.

PROJECTION		Research Develop Innovate RDI, Inc. 400 Columbus Avenue Valhalla, NY 10595		
		TITLE LOW PROFILE TACT SWITCH-SMT-RoHS COMPLIANT		
SCALE N/A	DR. JIN	DATE 05/18/07	REF. P/N: RTS-1197A-XXX-NL	SHEET 2 OF 3
TOLERANCE EXCEPT AS NOTED	CK. BM	PRE-SW	DRAWING NO. 3206	SIZE F
DEC. INCHES N/A	REV. -			
DEC. MILLIMETERS N/A	THIS DOCUMENT IS OWNED BY, AND THE INFORMATION CONTAINED IN IT IS PROPRIETARY TO, RDI. BY RECEIPT HEREOF THE HOLDER AGREES NOT TO USE THE INFORMATION AND NOT TO DISCLOSE IT TO ANY THIRD PARTY, NOR REPRODUCE THIS DOCUMENT WITHOUT THE WRITTEN CONSENT OF RDI, AND AGREES TO RETURN THIS DOCUMENT FORTHWITH UPON REQUEST.			
ANG. N/A				

ECN#	DATE	SYM	REVISION RECORD	AUTH	BY

2-3 CLIMATIC CHARACTERISTICS

No	ITEM	TEST CONDITIONS	PERFORMANCE
2.3.1	COLD TEST	1) TEMPERATURE: $-30 \pm 2^\circ\text{C}$ 2) DURATION OF TEST: 96 HOURS 3) TAKE OFF A DROP WATER 4) STANDARD CONDITION AFTER TEST: 1 HOUR	CONTACT RESISTANCE: 200mOhm MAX. 2.1.2 TO 2.1.4 AND 2.2.1 TO 2.2.2 SHALL BE SATISFIED.
2.3.2	HEAT TEST	1) TEMPERATURE: $80 \pm 2^\circ\text{C}$ 2) DURATION OF TEST: 96 HOURS 3) STANDARD CONDITION AFTER TEST: 1 HOUR	
2.3.3	TEMPERATURE CYCLE	1) TEST CYCLES: 5 CYCLES 2) STANDARD CONDITION AFTER TEST: 1 HOUR 3) 1 CYCLES IS 	
2.3.4	HUMIDITY TEST	1) TEMPERATURE: $60 \pm 2^\circ\text{C}$ 2) RELATIVE HUMIDITY: 90-95% Rh 3) DURATION OF TEST: 96 HOURS 4) TAKE OFF A DROP WATER. 5) STANDARD CONDITION AFTER TEST: 1 HOUR	
2.3.5	OPERATING LIFE TEST	1) DC 5V,50mA RESISTANCE LOAD 2) OPERATING SPEED: 15-20 CYCLES/SEC 3) PUSH FORCE: MAX. VALUE OF OPERATION FORCE 4) CYCLE OF OPERATION: 100,000 CYCLES	

3. SOLDEERING

3.1 AVAILABLE FOR MANNUAL TYPE

ITEM	CONDITION
SOLDERING TEMP	350°C
CONTINUOUS SOLDERING TIME	3 SEC MAX

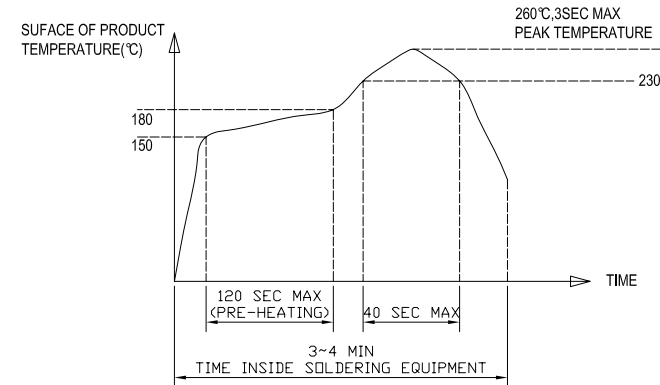
4. SOLDERING

REFLOW SOLDERING CONDITIONS


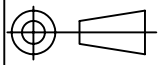
PREHEAT: TEMPERATURE ON THE COPPER FOIL SURFACE SHOULD REACH 180°C , 2 ± 0.3 MINUTES AFTER THE P.W.B ENTERED INTO THE SOLDERING EQUIPMENT.

SOLDERING HEAT: TEMPERATURE ON THE COPPER FOIL SURFACE SHOULD REACH THE PEAK TEMPERATURE OF 240°C WITHIN 20 SECONDS AFTER THE P.W.B ENTERED INTO SOLDERING HEAT ZONE.

COPPER FOIL SURFACE TEMPERATURE(°C)



TEMPERATURE PROFILE

PROJECTION		 Research Develop Innovate RDI, Inc. 400 Columbus Avenue Valhalla, NY 10595		
		TITLE LOW PROFILE TACT SWITCH-SMT-RoHS COMPLIANT		
SCALE N/A	DR. JIN	DATE 05/18/07	REF. P/N: RTS-1197A-XXX-NL	SHEET 3 OF 3
TOLERANCE EXCEPT AS NOTED	CK. BM	PRE-SW	DRAWING NO. 3206	SIZE F
DEC. INCHES N/A	THIS DOCUMENT IS OWNED BY, AND THE INFORMATION CONTAINED IN IT IS PROPRIETARY TO, RDI, BY RECEIPT HEREOF THE HOLDER AGREES NOT TO USE THE INFORMATION AND NOT TO DISCLOSE IT TO ANY THIRD PARTY, NOR REPRODUCE THIS DOCUMENT WITHOUT THE WRITTEN CONSENT OF RDI, AND AGREES TO RETURN THIS DOCUMENT FORTHWITH UPON REQUEST.			
DEC. MILLIMETERS N/A	ANG. N/A			

ECN#	DATE	SYM	REVISION RECORD	AUTH	BY