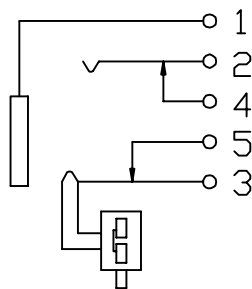
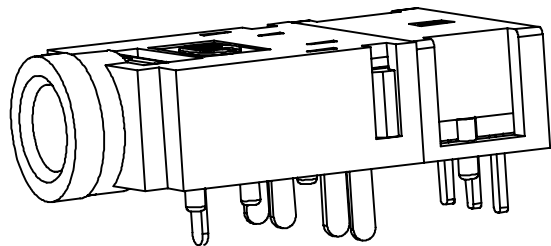
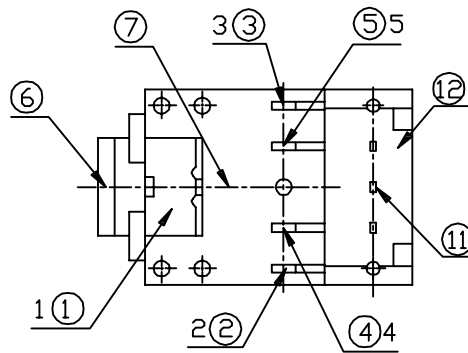
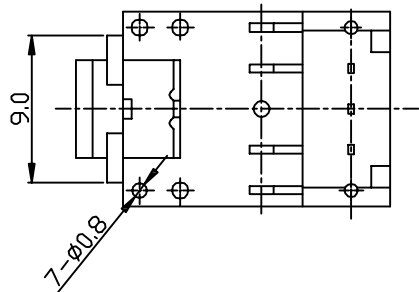
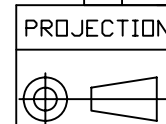


PCB LAYOUT TOP VIEW



CIRCUIT DIAGRAM

⑫	BOARD (SWITCH)	1	PF	
⑪	TERMINAL (SWITCH)	3	BRASS t=0.35	Ag-PLATED
⑩	SLIDER (SWITCH)	1	PA66 (BLACK)	
⑨	CONTACT CLPS	1	PBSR T=0.045	
⑧	HOUSING (SWITCH) P H-PJ-3042-5PAK-Z 1	1	PA66 (BLACK)	
⑦	HOUSING (BODY) PH-PJ-3042A FZ 1	1	PA66 (BLACK)	
⑥	FIX TURN MS- PJ-3042A1-Q 4	1	H59(\$ % &)	CuSn-PLATED
⑤	TERMINAL MT- PJ-3042-5Q \$	1	BRASS t=0.35	Ag-PLATED
④	TERMINAL MT- PJ-3042-4Q \$	1	BRASS t=0.30	Ag-PLATED
③	TERMINAL MT-PJ-3042-5P2K-3M \$	1	SUS301 t=0.25	Ag-PLATED
②	TERMINAL MT- PJ-3042-2Q \$	1	PHOSPHOR BRONZE t=0.25	Ag-PLATED
①	TERMINAL MT-P J-3042A 1-1Q \$	1	PHOSPHOR BRONZE t=0.25	Ag-PLATED
No.	PART NAME	QTY	MATERIAL (THICK, COLOR)	REMARK



Research Develop Innovate

RDI, Inc. 333 North Bedford Road, Suite 135, Mount Kisco, NY 10549

SCALE 4:1

TITLE 3.5 STEREO JACK SPDT (WITH SWITCH) -ROHS COMPLIANT

ANGULAR	±5°
16 < L < 63	±0.3
4 < L < 16	±0.2
L < 4	±0.15
UNSPECIFIED TOLERANCE	

TOLERANCE EXCEPT AS NOTED
DEC. MILLIMETERS
0.00±0.25mm
0.0±0.40mm
0±1.00mm


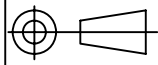
DR. Tina	DATE 10/06/11	REF. P/N: RSJ-300-NL	SHEET 1 OF 3
CK. MD	PRE- JK	DRAWING NO. 4163	SIZE F
			REV. A

THIS DOCUMENT IS OWNED BY, AND THE INFORMATION CONTAINED IN IT IS PROPRIETARY TO, RDI, BY RECEIPT HEREOF THE HOLDER AGREES NOT TO USE THE INFORMATION AND NOT TO DISCLOSE IT TO ANY THIRD PARTY, NOR REPRODUCE THIS DOCUMENT WITHOUT THE WRITTEN CONSENT OF RDI, AND AGREES TO RETURN THIS DOCUMENT FORTHWITH UPON REQUEST.

13-088	10/16/13	A	ADD THE SPECIFICATION	MD Tina
ECN#	DATE	SYM	REVISION RECORD	AUTH BY

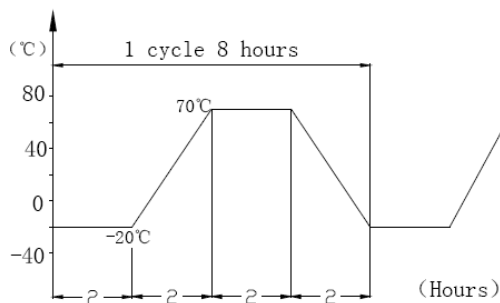
DESCRIPTION			
TITLE : 3.5 STEREO JACK SPDT (WITH SWITCH) – ROHS COMPLIANT			
P/N : RSJ-300-NL			
1. RATING: DC 30V 0.5A			
PRACTICAL TEMPERATURE RANGE	-16~65°C In-16 °C ~ + 65 °C temperature inside and use		
STANDARD ATMOSPHERIC CONDITIONS	UNLESS OTHERWISE SPECIFIED THE STANDARD RANGE OF ATMOSPHERIC CONDITIONS FOR MAKING MEASUREMENTS AND TESTS ARE AS FOLLOWS: (1) BETWEEN BODY AND CONDUCTOR: 5°C TO 35°C (2) BETWEEN CONDUCTORS NOT TO BE CONTACT: 45% TO 85% (3) PRESSURE: 86Kpa TO 106Kpa		
2. MECHANICAL			
	ITEM	TEST CONDITIONS	PERFORMANCE
2.1	CONNECTION FORCE	MEASUREMENT SHALL BE MADE AFTER CONNECTING AND DISCONNECTING USING STANDARD PLUG GAUGE 3 TIMES.	3~20N
	DISCONNECT ON FORCE	MEASUREMENT SHALL BE MADE AFTER CONNECTING AND DISCONNECTING USING STANDARD PLUG GAUGE 3 TIMES.	3~20N
2.2	TERMINAL STRENGTH	A STATIC LOAD OF 0.1N/m(1kgf/cm) SHALL BE APPLIED TO THE TIP OF THE TERMINAL FOR 1MIN IN ANY DIRECTION	THERE SHALL BE NO DAMAGE TO THE TERMINAL SUCH AS CRACKS, LOOSENESS OR PLAY ELECTRICAL ,AND MECHANICAL CHARACTERISTICS SHALL BE SATISFIED
3. ELECTRICAL			
	ITEM	TEST CONDITIONS	PERFORMANCE
3.1	CONTACT RESISTANCE	MEASURED AT SMALL CURRENT (100mA OR LESS) 1000Hz	≤0.03Ω
3.2	INSULATION RESISTANCE	APPLY A VOLTAGE OF 500V DC FOR 1 MIN TO FOLLOWING PORTIONS AFTER WHICH MEASUREMENT SHALL BE MADE: (1) BETWEEN BODY AND CONDUCTOR (2) BETWEEN CONDUCTORS NOT TO BE CONTACT (3) BETWEEN CONDUCTORS NOT TO BE WHEN PLUG IS INSERTED DC 500V 1 MIN	≥100MΩ

ITEM	TEST CONDITIONS	PERFORMANCE
3.3	DIELECTRIC STRENGTH AC 500V 1ms(50~60Hz) FOR 1 MIN TRIP CURRENT:0.5mA (1) BETWEEN BODY AND CONDUCTOR (2) BETWEEN CONDUCTORS NOT TO BE CONTACT (3) BETWEEN CONDUCTORS NOT TO BE WHEN PLUG IS INSERTED DC 500V 1 MIN	WITHOUT DAMAGE TO PARTS ARCING OR BREAKDOWN ETC
4. USABILITY		
ITEM	TEST CONDITIONS	PERFORMANCE
4.1	SOLDER-ABILITY TEST THE TOP OF THE TERMINALS SHALL BE DIPPED 1mm IN THE SOLDER BATH OF 240±5°C FOR 3±0.5 SECONDS	(1) SOLDER WETTING TIME SHALL BE 3 SEC OR LESS (2) THE AREA OF SOLDERING SHOULD BE OVER 75%
4.2	RESISTANCE TO SOLDERING HEAT TEST SOLDERING IRON METHOD: BIT TEMPERATURE 330±5°C APPLICATION TIME OF SOLDERING IRON3±0.5 SEC HOWEVER EXCESSIVE PRESSURE SHALL NOT BE APPLIED TO THE TERMINAL	WITHOUT DEFORMATION OF CASE OR EXCESSIVE LOOSENESS OF TERMINALS ELECTRICAL CHARACTERISTICS SHALL BE SATISFIED
4.3	HUMIDITY TEST THE JACK SHALL BE STORED AT A TEMPERATURE OF 40±2°C AND A HUMIDITY OF 90%TO 96% FOR 96 Hr, THEN THE JACK SHALL BE MAINTAINED AT STANDARD ATMOSPHERIC CONDITION FOR 1 Hr FOR OTHER PROCEDURES	THERE SHALL BE NO DAMAGE ON APPEARANCE
4.4	HEAT TEST THE JACK SHALL BE STORED AT A TEMPERATURE OF 70±2°C FOR 96 HOURS, AND THEN IT SHALL BE SUBJECTED TO THE CONTROLLED RECOVERY MBASURBM	MECHANICAL AND ELECTRICAL CHARACTERISTICS SHALL BE SATISFIED
4.5	COLD TEST THE JACK SHALL BE STORED AT A TEMPERATURE OF -25±3°C FOR 96 HOURS AND THEN IT SHALL BE SUBJECTED TO THE CONTROLLED RECOVERY CONDITIONS FOR 1 HOUR AFTER WHICH	

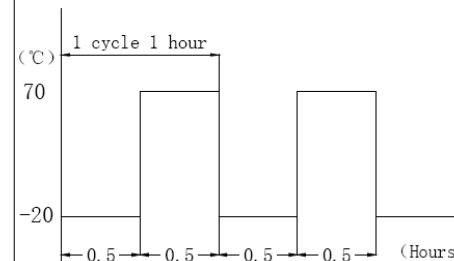
PROJECTION				Research Develop Innovate	
		RDI, Inc. 333 North Bedford Road, Suite 135, Mount Kisco, NY 10549			
SCALE	4:1	TITLE 3.5 STEREO JACK SPDT (WITH SWITCH) –ROHS COMPLIANT			
TOLERANCE EXCEPT AS NOTED	DR. Tina	DATE	10/06/11	REF.	P/N: RSJ-300-NL SHEET 2 OF 3
DEC. MILLIMETERS	0.00±0.25mm	CK.	MD	PRE- JK	DRAWING NO. 4163 SIZE F REV. A
	0.0±0.40mm	THIS DOCUMENT IS OWNED BY, AND THE INFORMATION CONTAINED IN IT IS PROPRIETARY TO, RDI, BY RECEIPT HEREOF THE HOLDER AGREES NOT TO USE THE INFORMATION AND NOT TO DISCLOSE IT TO ANY THIRD PARTY, NOR REPRODUCE THIS DOCUMENT WITHOUT THE WRITTEN CONSENT OF RDI, AND AGREES TO RETURN THIS DOCUMENT FORTHWITH UPON REQUEST.			
	0±1.00mm	ANG.	N/A		

13-088	10/16/13	A	ADD THE SPECIFICATION			MD	Tina
ECN#	DATE	SYM	REVISION RECORD			AUTH	BY

ITEM	TEST CONDITIONS	PERFORMANCE
4.6 LIFE TEST	WITHOUT LOAD CONNECTION AND DISCONNECTION SHALL BE MADE WITH THE MATING PLUGS AND JACKS FOR 5,000 CYCLES AT A SPEED OF 10 TO 25 CYCLES/MIN LOAD: AT RATING CONDITION (NON-INDUCTIVE LOAD) CONNECTION AND DISCONNECTION SHALL BE MADE 1,000 CYCLES AT A SPEED 10 TO 20 CYCLES / MIN	(1) CONTACT RESISTANCE SHALL BE $\leq 0.1\Omega$ (2) DISCONNECTION FORCE SHALL BE 3 TO 20N (3) MECHANICAL AND ELECTRICAL CHARACTERISTICS SHALL BE SATISFIED
4.7 TEMPERATURE CYCLING TEST	THE JACK SHALL BE SUB JECTED TO 5 CYCLES OF THE FOLLOWING CONDITIONS SHOWN IN THE FIGURE,AND THEN SHALL RETURNED ALLOWED TO REMAIN IN ROOM AMBIENT CONDITION FOR 30 MINUTES	THERE SHALL BE NO DEFORMATION OR CRACKS IN MOLDED PART. INSERTION & EXTRACTION FORCE:3 TO 20N CONTACT RESISTANCE:MAX.30M Ω INSULATION RESISTANCE: MIN.100 M Ω DIELECTRIC WITHSTANDING VOLTAGE: 500VAC/MIN (BETWEEN TERMINALS)



ITEM	TEST CONDITIONS	PERFORMANCE
4.8 Cold&HEAT SHOCK TEST	THE JACK SHALL BE SUBJECTED TO 5 CYCLES OF THE FOLLOWING CONDITIONS SHOWN IN THE FIGURE,AND THEN SHALL RETURNED AND ALLOWED, TO REMAIN IN ROOM AMBIENT CONDITION FOR 30 MINUTES	THERE SHALL BE NO DEFORMATION OR CRACKS IN MOLDED PART. INSERTION & EXTRACTION FORCE:3 TO 20N CONTACT RESISTANCE: MAX.30M Ω INSULATION RESISTANCE: MIN.100 M Ω DIELECTRIC WITHSTANDING VOLTAGE:500VAC/MIN (BETWEEN TERMINALS)



PROJECTION		Research Develop Innovate RDI, Inc. 333 North Bedford Road, Suite 135, Mount Kisco, NY 10549	
SCALE 4:1		TITLE 3.5 STERED JACK SPDT (WITH SWITCH) -ROHS COMPLIANT	
TOLERANCE EXCEPT AS NOTED	DR. Tina	DATE 10/06/11	REF. P/N: RSJ-300-NL SHEET 3 OF 3
DEC. MILLIMETERS 0.00±0.25mm 0.0±0.40mm 0±1.00mm	CK. MD	PRE- JK	DRAWING NO. 4163 SIZE F REV. A
THIS DOCUMENT IS OWNED BY, AND THE INFORMATION CONTAINED IN IT IS PROPRIETARY TO, RDI, BY RECEIPT HEREOF THE HOLDER AGREES NOT TO USE THE INFORMATION AND NOT TO DISCLOSE IT TO ANY THIRD PARTY, NOR REPRODUCE THIS DOCUMENT WITHOUT THE WRITTEN CONSENT OF RDI, AND AGREES TO RETURN THIS DOCUMENT FORTHWITH UPON REQUEST.			

13-088	10/16/13	A	ADD THE SPECIFICATION	MD	Tina
ECN#	DATE	SYM	REVISION RECORD	AUTH	BY