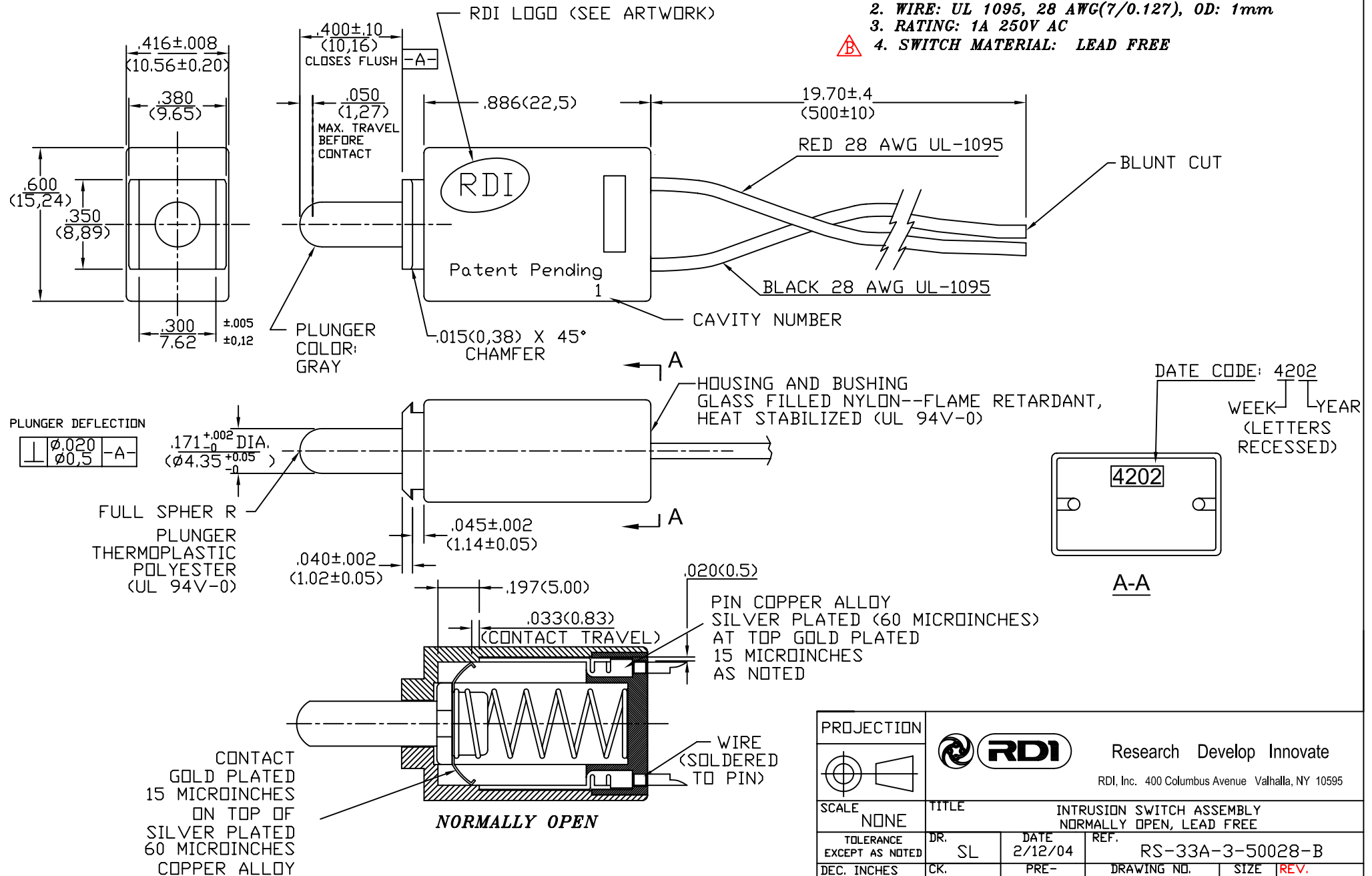


**NOTE:**

1. DIMENSIONS IN PARENTHESIS ARE IN MILLIMETERS.
2. WIRE: UL 1095, 28 AWG(7/0.127), OD: 1mm
3. RATING: 1A 250V AC
4. SWITCH MATERIAL: LEAD FREE



PROJECTION				Research Develop Innovate RDI, Inc. 400 Columbus Avenue Valhalla, NY 10595	
SCALE	NONE	TITLE			
INTRUSION SWITCH ASSEMBLY		NORMALLY OPEN, LEAD FREE			
TOLERANCE EXCEPT AS NOTED	DR. SL	DATE	2/12/04	REF.	RS-33A-3-50028-B
DEC. INCHES	N/A	CK. SL	PRE-SW	DRAWING NO.	1704
DEC. MILLIMETERS	±0.25	SIZE	A	REV.	B
ANG.	±3°	THIS DOCUMENT IS OWNED BY, AND THE INFORMATION CONTAINED IN IT IS PROPRIETARY TO, RDI. BY RECEIPT HEREOF THE HOLDER AGREES NOT TO USE THE INFORMATION AND NOT TO DISCLOSE IT TO ANY THIRD PARTY, NOR REPRODUCE THIS DOCUMENT WITHOUT THE WRITTEN CONSENT OF RDI, AND AGREES TO RETURN THIS DOCUMENT FORTHWITH UPON REQUEST.			

ECN#	DATE	SYM	REVISION RECORD	AUTH	BY
04-475	6/29/04	B	ADDED LEAD FREE	BM	SL
04-200	3/29/04	A	REV'D DIM: 10.56(.416") WAS 10.16(.400")	BM	SL