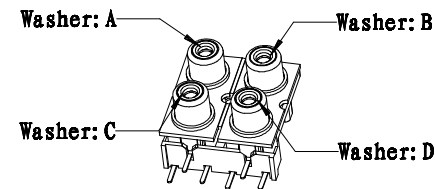
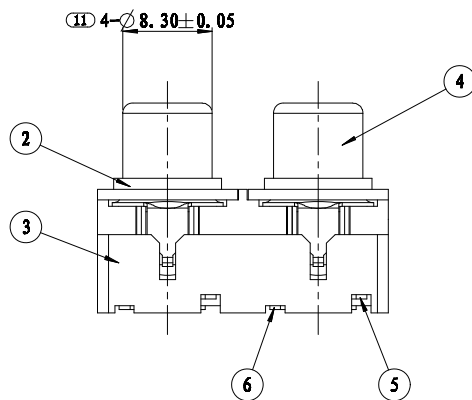
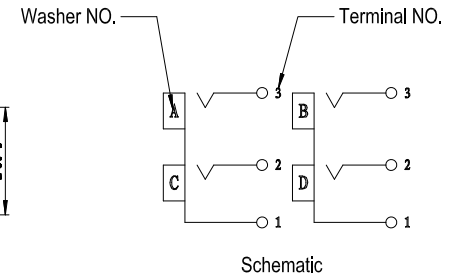


Recommend PCB layout  
(Jack TOP View)  
Tolerances : ±0.05  
recommend PCB Thickness :1.6 mm



NOTE: ALL DIMS ARE IN mm.

14-100	09/05/14	H	CHANGE THE COLOR OF HOUSING FROM WHITE TO BALCK	BC	Ian
14-025	03/25/14	G	TO CHANGE THE SIZE OF THE PRODUCT	BC	Tino
09-145	05/19/09	F	ADDED COLOR OPTION "160"	GM	JY
09-023	03/04/09	E	THE DIMENSION 1.25mm WAS 1.5mm	Bill	JY
08-376	10/21/08	D	ADDED SPEC AS PAGE 2	Bill	JY
08-172	05/08/08	C	ADDED COLOR NUMBER "150"	Bill	JY
08-147	04/15/08	B	ADDED COLOR NUMBER "140"	Bill	JY
ECN#	DATE	SYM	REVISION RECORD	AUTH	BY

PROJECTION		<b>RDI</b> Research Develop Innovate RDI, Inc. 333 North Bedford Road, Suite 135, Mount Kisco, NY 10549			
		TITLE JACK-ROHS COMPLAINT			
SCALE N/A		DR. JY	DATE 05/06/07	REF. P/N: RH1018XXXGNL	SHEET 1 OF 3
TOLERANCE EXCEPT AS NOTED		CK. Bill	PRE- JK	DRAWING NO. 3193	SIZE F
DEC. INCHES N/A		THIS DOCUMENT IS OWNED BY, AND THE INFORMATION CONTAINED IN IT IS PROPRIETARY TO, RDI, BY RECEIPT HEREOF THE HOLDER AGREES NOT TO USE THE INFORMATION AND NOT TO DISCLOSE IT TO ANY THIRD PARTY, NOR REPRODUCE THIS DOCUMENT WITHOUT THE WRITTEN CONSENT OF RDI, AND AGREES TO RETURN THIS DOCUMENT FORTHWITH UPON REQUEST.			
DEC. MILLIMETERS ±0.10		REV. H			
ANG. 0°-0.5°					

1. MATERIAL CHART

2	COVER	2	PA	BLACK	
4	BARREL	2	BRASS(H65)	Au	t=0.4
6	PIN2	2	BRASS(H62)	CuSn	t=0.4
5	PIN1	2	BRASS(H62)	CuSn	t=0.4
1	INSERTS	4	PBT	SEE COLOR CHART PAGE #2	
3	HOUSING	1	PBT	BLACK	
NO.	NAME	QTY.	MATERIAL	FINISHED	REMARK



2. RATED LOAD

- 2.1 RATED VOLTAGE: 12V(DC)
- 2.2 RATED CURRENT: 1A

3. ELECTRICAL PROPERTIES

No.	ITEM	TEST CONDITIONS	SPECIFICATION
3.1	CONTACT RESISTANCE	THE MEASUREMENT SHALL BE MADE AT BETWEEN ANY OF TWO SRTIPS, WHICH CONTACT EACH OTHER AND BETWEEN THE CONTACTED PARTS OF PLUG AND SOCKET	≤30mOhm
3.2	INSULATION RESISTANCE	500V DC SHALL BE APPLIED BETWEEN THE CONDUCTORS, WHICH INSULATE FROM EACH OTHER FOR ONE MINUTE, WHEN THE PLUG IS INSERTED INTO SOCKET, AND WHEN THE PLUG IS INSERTED INTO SOCKET, AND WHEN THE PLUG ISN'T INSERTED INTO SOCKET	≥100MOhm
3.3	WITHSTAND VOLTAGE (LEAK CURRENT ≤1mA)	AC500V, 50Hz SHALL BE APPLIED BETWEEN THE CONDUCTORS, WHICH INSULATE FROM EACH OTHER FOR 5 MINUTE, WHEN THE PLUG IS INSERTED INTO SOCKET, AND WHEN THE PLUG IS INSERTED INTO SOCKET, AND WHEN THE PLUG ISN'T INSERTED INTO SOCKET	THERE SHALL NOT BE BREAKDOWN OR ARCING

4. ORDER LABEL:

- P/N: RH1018 XXX G NL  
 (1) (2) (3) (4)  
 (1). SERIES No.  
 (2). COLOR GUIDE  
 (3). GOLD PLATING:G=GOLD BARREL  
 (4). RoHS COMPLIANT "NL"

5. NOTES:


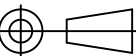
- (1) PLASTIC COMPONENTS: 94V-0
- (2) WAVE SOLDERING TEMP.: 260± 5°C FOR 5± 1 SECOND

6. COLOR GUIDE:

MODEL No.	010	020	030	040	050	060	070	080	
COLOR B=BLACK Y=YELLOW O=ORANGE G=GREEN W=WHITE R=RED U=BLUE	A	W	B	B	R	Y	□	Y	R
	B	W	B	B	R	B	□	B	W
	C	R	B	R	W	W	□	R	Y
	D	R	B	R	W	Y	□	W	R
MODEL No.	090	100	110	120	130	140	150	160	
COLOR B=BLACK Y=YELLOW O=ORANGE G=GREEN W=WHITE R=RED U=BLUE	A	W	Y	R	Y	Y	Y	W	W
	B	Y	Y	W	W	Y	G	B	R
	C	R	R	R	Y	Y	U	R	W
	D	Y	R	W	W	Y	R	B	R



14-100	09/05/14	H	CHANGE THE COLOR OF HOUSING FROM WHITE TO BALCK	BC	Ian
14-025	03/25/14	G	TO CHANGE THE SIZE OF THE PRODUCT	BC	Tino
09-145	05/19/09	F	ADDED COLOR OPTION "160"	GM	JY
09-023	03/04/09	E	THE DIMENSION 1.25mm WAS 1.5mm	Bill	JY
08-376	10/21/08	D	ADDED SPEC AS PAGE 2	Bill	JY
08-172	05/08/08	C	ADDED COLOR NUMBER "150"	Bill	JY
08-147	04/15/08	B	ADDED COLOR NUMBER "140"	Bill	JY
ECN#	DATE	SYM	REVISION RECORD	AUTH	BY

PROJECTION	 Research Develop Innovate RDI, Inc. 333 North Bedford Road, Suite 135, Mount Kisco, NY 10549		
	SCALE	TITLE	
	N/A	JACK-ROHS COMPLIANT	
TOLERANCE EXCEPT AS NOTED	DR. JY	DATE 05/06/07	REF. P/N: RH1018XXXGNL
DEC. INCHES	CK. Bill	PRE- JK	DRAWING NO. 3193
DEC. MILLIMETERS	N/A	SIZE F	SHEET 2 OF 3
ANG. N/A	THIS DOCUMENT IS OWNED BY, AND THE INFORMATION CONTAINED IN IT IS PROPRIETARY TO, RDI, BY RECEIPT HEREOF THE HOLDER AGREES NOT TO USE THE INFORMATION AND NOT TO DISCLOSE IT TO ANY THIRD PARTY, NOR REPRODUCE THIS DOCUMENT WITHOUT THE WRITTEN CONSENT OF RDI, AND AGREES TO RETURN THIS DOCUMENT FORTHWITH UPON REQUEST.		

7. MECHANICAL PROPERTIES

No.	ITEM	TEST CONDITIONS	SPECIFICATION
7.1	INSERTION AND EXTRACTION FORCE	THE INSERTION AND EXTRACTION FORCE SHALL BE MEASURED WITH THE GAUGE PLUG	5~30N
7.2	TERMINAL STRENGTH	A STATIC LOAD OF 0.5Kg SHALL BE APPLIED TO THE TERMINAL FOR ONE MINUTE IN ANY DIRECTIONS	NO BREAKDOWN, LOOSING AND DEFORMING, ETC. MECHANICAL AND ELECTRICAL PROPERTIES SHALL BE AVAILABLE
7.3	MECHANICAL LIFE	INSERTED AND EXTRACTED FOR 5,000 CYCLES AT THE SPEED OF 20~30 CYCLES PER MINUTE BY SPECIAL LIFE TEST DEVICE OR MANUAL OPERATION ACCORDING TO GB5095.5-86 TEST 9a	CONTACT RESISTANCE ≤60mOHM WITHSTANDING VOLTAGE AND INSULATION SHALL BE AVAILABLE

8. MECHANICAL PROPERTIES

No.	ITEM	TEST CONDITIONS	SPECIFICATION
8.1	COLD HEAT WITHSTANDING		DIMENSIONS SHALL MEET THE REQUIREMENT, MECHANICAL AND ELECTRICAL PROPERTIES SHALL BE AVAILABLE
8.2	HUMIDITY WITHSTANDING	RELATIVE HUMIDITY: 95± 3% TEST TEMPERATURE: 40°C LAST FOR 2 DAYS, THE SAMPLE SHALL BE TAKEN OUT FOR ELECTRICAL PROPERTY MEASUREMENT WITHIN 5 MINUTES. MEASURE AFTER ONE HOUR RECOVERY IN STANDARD ATMOSPHERIC CONDITIONS	DIMENSIONS SHALL MEET THE REQUIREMENT, MECHANICAL AND ELECTRICAL PROPERTIES SHALL BE AVAILABLE

No.	ITEM	TEST CONDITIONS	SPECIFICATION
8.3	SALT SPRAY TEST	ACCORDING TO GB2423.17 TEST KA TEMPERATURE: 35± 2°C THE DENSITY OF NACL SOLUTION IS 5± 0.1%(WEIGHT) SPRAY SALT FOG FOR 48 HOURS CONTINUOUSLY	THERE SHALL NOT BE SERIOUS CORROSION ON THE SURFACE OF METAL
8.4	VIBRATION WITHSTANDING	FREQUENCY: 10~55Hz DISPLACEMENT AMPLITUDE: 0.35mm ACCELERATION AMPLITUDE: 50.0m/s CYCLE INDEX OF SWEEP FREQUENCY: 30 CYCLES	MECHANICAL AND ELECTRICAL PROPERTIES SHALL BE AVAILABLE
8.5	VIBRATION WITHSTANDING	SAMPLE DROPS FROM THE SPECIFIED HEIGHT(50mm, 500mm,750mm,1000mm) IN 3 INTERSECTION AXIS, ONE SHOCK EACH DIRECTION	MECHANICAL AND ELECTRICAL PROPERTIES SHALL BE AVAILABLE

14-100	09/05/14	H	CHANGE THE COLOR OF HOUSING FROM WHITE TO BALCK	BC	Ian
14-025	03/25/14	G	TO CHANGE THE SIZE OF THE PRODUCT	BC	Tino
09-145	05/19/09	F	ADDED COLOR OPTION "160"	GM	JY
09-023	03/04/09	E	THE DIMENSION 1.25mm WAS 1.5mm	Bill	JY
08-376	10/21/08	D	ADDED SPEC AS PAGE 2	Bill	JY
08-172	05/08/08	C	ADDED COLOR NUMBER "150"	Bill	JY
08-147	04/15/08	B	ADDED COLOR NUMBER "140"	Bill	JY
ECN#	DATE	SYM	REVISION RECORD	AUTH	BY

PROJECTION		Research Develop Innovate RDI, Inc. 333 North Bedford Road, Suite 135, Mount Kisco, NY 10549			
	SCALE	TITLE JACK-ROHS COMPLIANT			
TOLERANCE EXCEPT AS NOTED	DR. JY	DATE 05/06/07	REF. P/N: RH1018XXXGNL	SHEET 3 OF 3	
DEC. INCHES N/A	CK. Bill	PRE- JK	DRAWING NO. 3193	SIZE F	REV. H
DEC. MILLIMETERS N/A	THIS DOCUMENT IS OWNED BY, AND THE INFORMATION CONTAINED IN IT IS PROPRIETARY TO, RDI, BY RECEIPT HEREOF THE HOLDER AGREES NOT TO USE THE INFORMATION AND NOT TO DISCLOSE IT TO ANY THIRD PARTY, NOR REPRODUCE THIS DOCUMENT WITHOUT THE WRITTEN CONSENT OF RDI, AND AGREES TO RETURN THIS DOCUMENT FORTHWITH UPON REQUEST.				
ANG. N/A					