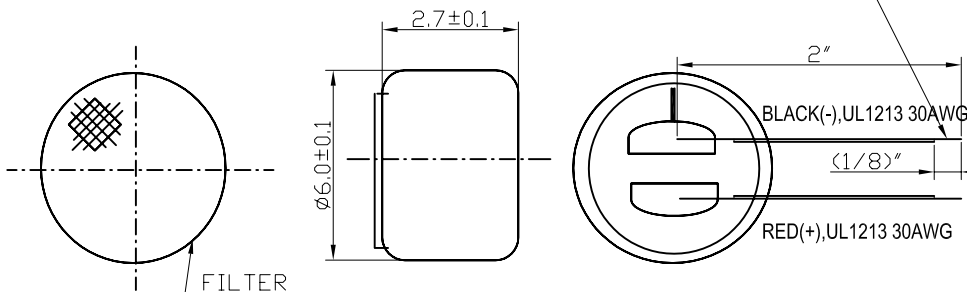


1. CONSTRUCTION

DIMENSIONS: Ø6.0X 2.7 (UNIT:mm)

STRIPPED AND TINNED LEAD



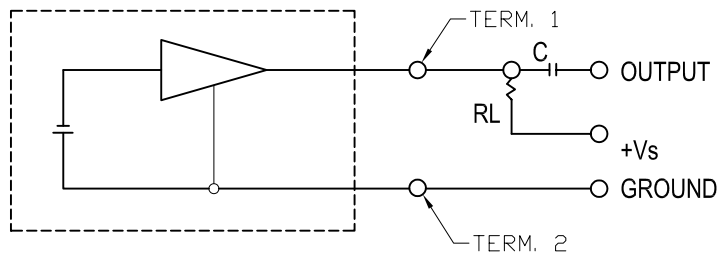
4. ELECTRICAL SPECIFICATIONS

TEST CONDITION (Vs=DC 3.0V,RL=2.2KOHM TEMP=20°C,ROOM HUMIDITY= 65%)

ITEM	SYMBOL	TEST CONDITION	MINIMUM	STANDARD	MAXIMUM	UNIT
SENSITIVITY ***	S	f = 1KHz,P = 1Pa	-39	-42	-45	dB
OUTPUT IMPEDANCE	Zout	f = 1KHz,P = 1Pa			2.2	KOhm
DIRECTMITY						
CURRENT CONSUMPTION	I				0.5	mA
S/N RATIO	S/N	F=1KHz,P=1Pa A CURVE	60			dB
DECREASING VOLTAGE CHARACTERISTIC	ΔS	F=1KHz,P=1Pa Vs=1.5V TO 1.0V			-3	dB
SOUND PRESSURE LEVEL		F=1KHz	110			dB

*** 0dB=1V/uPa

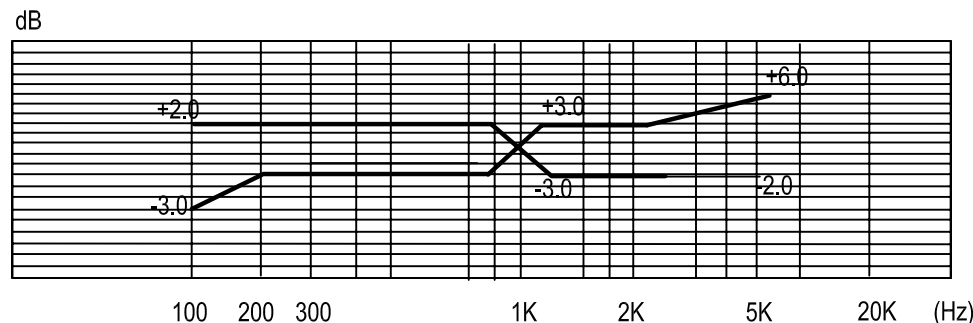
2. MEASUREMENT CIRCUIT



MIC CASE

RL=2.2KOhm C=1uF

5 FREQUENCY RESPONSE ALLOWANCE RANGE



3. SPECIFICATIONS

NO.	ITEM	STANDARD	NO.	ITEM	STANDARD
1	SENSITIVITY	-42± 3dB	6	STANDARD POWER SUPPLY	DC 3.0V
2	OUTPUT IMPEDANCE	$\le 2.2K\Omega$	7	MIN OPERATION VOLTAGE	1.5V
3	DIRECTIVITY	OMNIDIRECTIONAL	8	CURRENT CONSUMPTION	$\le 0.5mA$
4	FREQUENCY RANGE	50-16,000 Hz	9	SIGNAL TO NOISE RATIO	$\ge 60dB$
5	OPERATION VOLTAGE	DC 1.5V-10V			

NOTE: ALL DIMS ARE IN mm (or inch)

PROJECTION		RDI Research Develop Innovate RDI, Inc. 400 Columbus Avenue Valhalla, NY 10595	
SCALE N/A	TITLE MICROPHONE ASSEMBLY-RoHS COMPLIANT		
TOLERANCE EXCEPT AS NOTED	DR. Jin	DATE 02/01/07	REF. P/N: REM-27-42-50mm-WL-NL
DEC. INCHES N/A	CK. GM	PRE- MI	DRAWING NO. 3108 SIZE F
DEC. MILLIMETERS N/A	THIS DOCUMENT IS OWNED BY, AND THE INFORMATION CONTAINED IN IT IS PROPRIETARY TO, RDI, BY RECEIPT HEREOF THE HOLDER AGREES NOT TO USE THE INFORMATION AND NOT TO DISCLOSE IT TO ANY THIRD PARTY, NOR REPRODUCE THIS DOCUMENT WITHOUT THE WRITTEN CONSENT OF RDI, AND AGREES TO RETURN THIS DOCUMENT FORTHWITH UPON REQUEST.		
ANG. N/A	1 OF 2 REV. -		

ECN#	DATE	SYM	REVISION RECORD	AUTH	BY


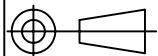
6. MECHANICAL SPECIFICATION

WEIGHT	LESS THAN: 0.5g	
SOLDERING HEAT SHOCK	TO BE NO INTERFERE IN OPERATION AFTER SOLDERING HEAT SHOCK, TEMPERATURE 260°C±5°C FOR 10±1 SECONDS.	
TERMINAL MECHANICAL STRENGTH	TO BE NO INTERFERE IN OPERATION AFTER PULLED THE TERMINAL WITH 1Kg STRENGTH FOR 1 MINUTE.	
ABSOLUTE MAXIMUM RATINGS	OPERATING VOLTAGE 10V	STORAGE TEMPERATURE RANGE -20~+60°C

7. RELIABILITY TEST

VIBRATION TEST	TO BE NO INTERFERE IN OPERATION AFTER VIBRATION 10Hz TO 30Hz FOR 1 MINUTE FULL AMPLITUDE 0.55mm FOR 1 HOURS AT THREE AXISES.
DROP TEST	TO BE NO INTERFERE IN OPERATION AFTER DROPPED TO CONCRETE FLOOR EACH ONE TIME FROM 1 METER HEIGHT AT THREE DIRECTIONS IN STATE OF PACKING.
TEMPERATURE TEST	a) AFTER EXPOSURE AT 65°C FOR 200 HOURS, SENSITIVITY TO BE WITHIN ±3dB FROM INITIAL SENSITIVITY. (THE MEASUREMENT TO BE DONE AFTER 2 HOURS OF CONDITIONING AT 20°C) b) AFTER EXPOSURE AT -20°C FOR 200 HOURS, SENSITIVITY TO BE WITHIN ±3dB FROM INITIAL SENSITIVITY. (THE MEASUREMENT TO BE DONE AFTER 2 HOURS OF CONDITIONING AT 20°C)

HUMIDITY TEST	AFTER EXPOSURE AT 60°C±2°C AND 90 TO 93±3% RELATIVE HUMIDITY FOR 200 HOURS, SENSITIVITY TO BE WITHIN ±3dB FROM INITIAL SENSITIVITY. (THE MEASUREMENT TO BE DONE AFTER 2 HOURS OF CONDITIONING AT 20°C)
TEMPERATURE CYCLE TEST	AFTER EXPOSURE AT -20°C FOR 2 HOURS, AT 20°C FOR 30 MINUTES, AT 60°C FOR 10 MINUTES, AT 20°C FOR 10 MINUTES, 5 CYCLES, SENSITIVITY TO BE WITHIN ±3dB FROM INITIAL SENSITIVITY. (THE MEASUREMENT TO BE DONE AFTER 2 HOURS OF CONDITIONING AT 20°C)

PROJECTION	 Research Develop Innovate RDI, Inc. 400 Columbus Avenue Valhalla, NY 10595		
	TITLE MICROPHONE ASSEMBLY-ROHS COMPLIANT		
SCALE N/A	DR. Jin	DATE 02/01/07	REF. P/Ni REM-27-42-50mm-WL-NL
TOLERANCE EXCEPT AS NOTED	CK. GM	PRE-MI	DRAWING NO. 3108 SIZE F
DEC. INCHES N/A	THIS DOCUMENT IS OWNED BY, AND THE INFORMATION CONTAINED IN IT IS PROPRIETARY TO, RDI. BY RECEIPT HEREOF THE HOLDER AGREES NOT TO USE THE INFORMATION AND NOT TO DISCLOSE IT TO ANY THIRD PARTY, NOR REPRODUCE THIS DOCUMENT WITHOUT THE WRITTEN CONSENT OF RDI, AND AGREES TO RETURN THIS DOCUMENT FORTHWITH UPON REQUEST.		
DEC. MILLIMETERS N/A	ANG. N/A	2 OF 2 REV. -	

ECN#	DATE	SYM	REVISION RECORD	AUTH	BY
------	------	-----	-----------------	------	----